

BABY CHECK APP

Is your baby unwell?

Does your baby need to see a health professional?



The FREE Baby Check app has been designed by The Lullaby Trust to help you decide whether your baby needs to see a health professional.




Spotting early when a baby is very ill can help in their treatment and recovery.

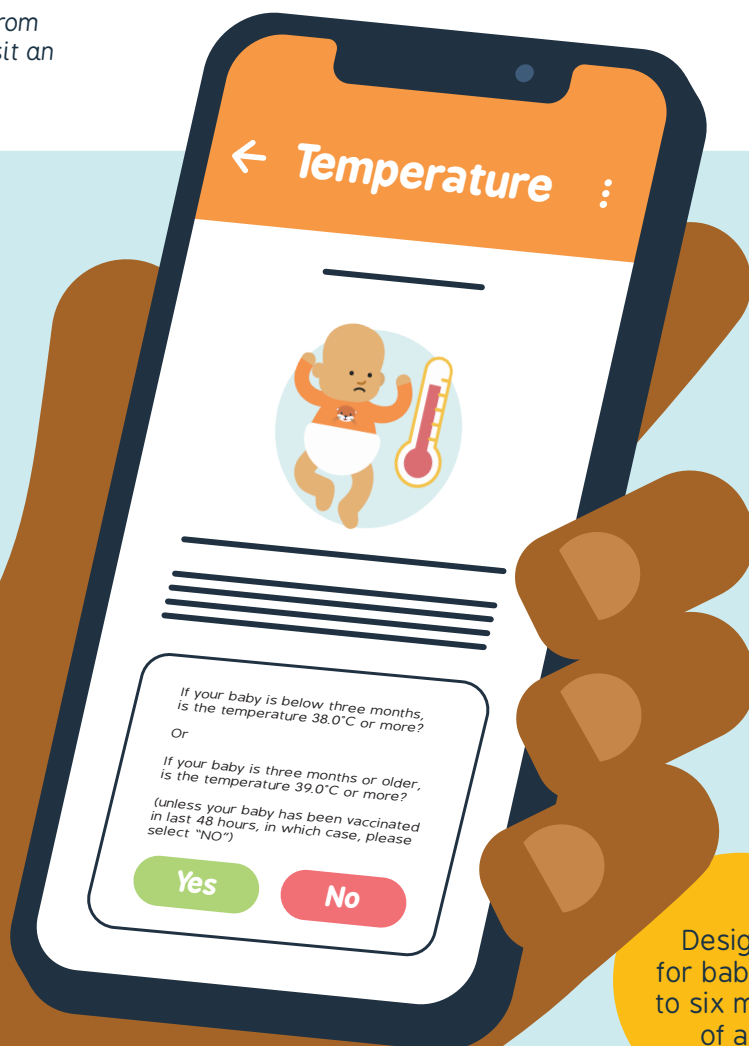
You should always seek support and advice from your midwife, health visitor, GP, NHS 111 or visit an emergency department if you are worried.

You can download the Baby Check app for FREE on Google Play and in the Apple App Store.

Download on the
 App Store

GET IT ON
 Google Play

 020 7802 3200
 office@lullabytrust.org.uk
 www.lullabytrust.org.uk



Designed for babies up to six months of age